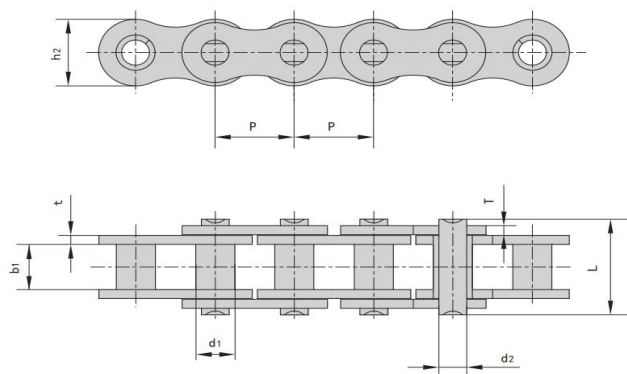


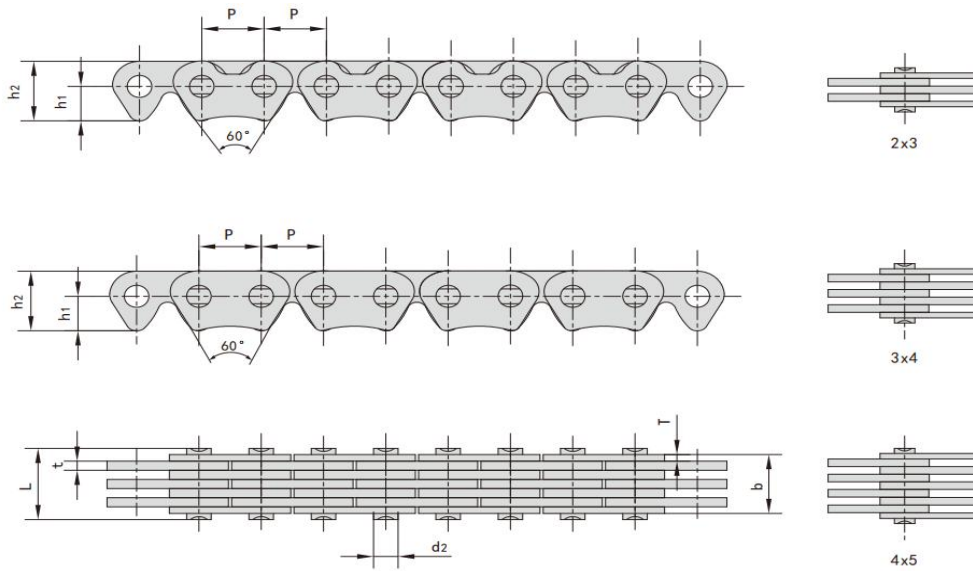
Motorcycle Engine chains



Chain No.	Pitch	Bush diameter	Width between inner plates	Pin diameter	Pin length	Inner plate depth	Plate thickness	Tensile strength	Average tensile strength	Weight per meter
	P	r	bi min	d2 max	L max	h2 max	t/T max	Q min	Q0	q
	mm	mm	mm	mm	mm	mm	mm	kN/lbf	kN	kg/m
25	6.350	3.30	3.18	2.31	7.90	6.00	0.80	3.5/795	4.6	0.15
25H	6.350	3.30	3.18	2.31	8.90	6.00	1.04	4.8/1091	5.5	0.17
25H(E)	6.350	3.30	3.18	2.31	8.90	6.00	1.04	5.8/1304	6.4	0.18
25HF2	6.350	3.30	3.18	2.31	5.80	1.20/1.10	5.8/1304	6.4	0.19	
25SHF1	6.350	3.30	3.18	2.01	8.95	5.90	1.04	4.8/1091	5.5	0.19
219H	7.774	4.59	5.00	3.01	11.90	7.40	1.20/1.04	7.3/1641	8.0	0.28
*C219H	7.774	4.59	5.00	3.01	11.90	7.40	1.20/1.04	7.3/1641	8.0	0.33
219HT	7.774	4.59	4.60	3.01	12.15	7.55	1.40/1.30	6.6/1483	7.2	0.33
219HF2	7.774	4.59	4.50	3.01	11.90	7.40	1.40/1.30	6.6/1483	7.2	0.31
219HF1	7.785	4.60	4.50	3.28	13.00	7.00	2.00/1.40	9.0/2024	9.8	0.37
270H	8.500	5.00	4.75	3.28	13.15	8.45	1.80/1.40	10.8/2428	11.9	0.43

*Straight side plates

Motorcycle Engine Silent Chains



Chain No.	Pitch	Chain width	Pin diameter	Pin length	Distance from hole center to tooth	Plate depth	Plate thickness	Guide type	Number of plates	Tensile strength	Average tensile strength	Weight per meter
	P	b	d ₂	L	h ₁	h ₂	t/T		n	Q _{min}	Q ₀	q
	mm	mm	mm	mm	mm	mm	mm			kN/lbf	kN	kg/m
CL04-2×3	6.35	4.35	2.50	6.05	3.94	6.80	1.04/0.75	Outside	5(2 3)	5.19/1179	5.4	0.22
CL04-3×4	6.35	6.35	2.50	8.20	3.90	6.72	1.04/0.75	Outside	7(3 4)	8.82/2004	9.2	0.28
CL04-4×5	6.35	9.40	2.50	10.90	3.90	6.72	1.04	Outside	9(4 5)	11.76/2672	12.3	0.35